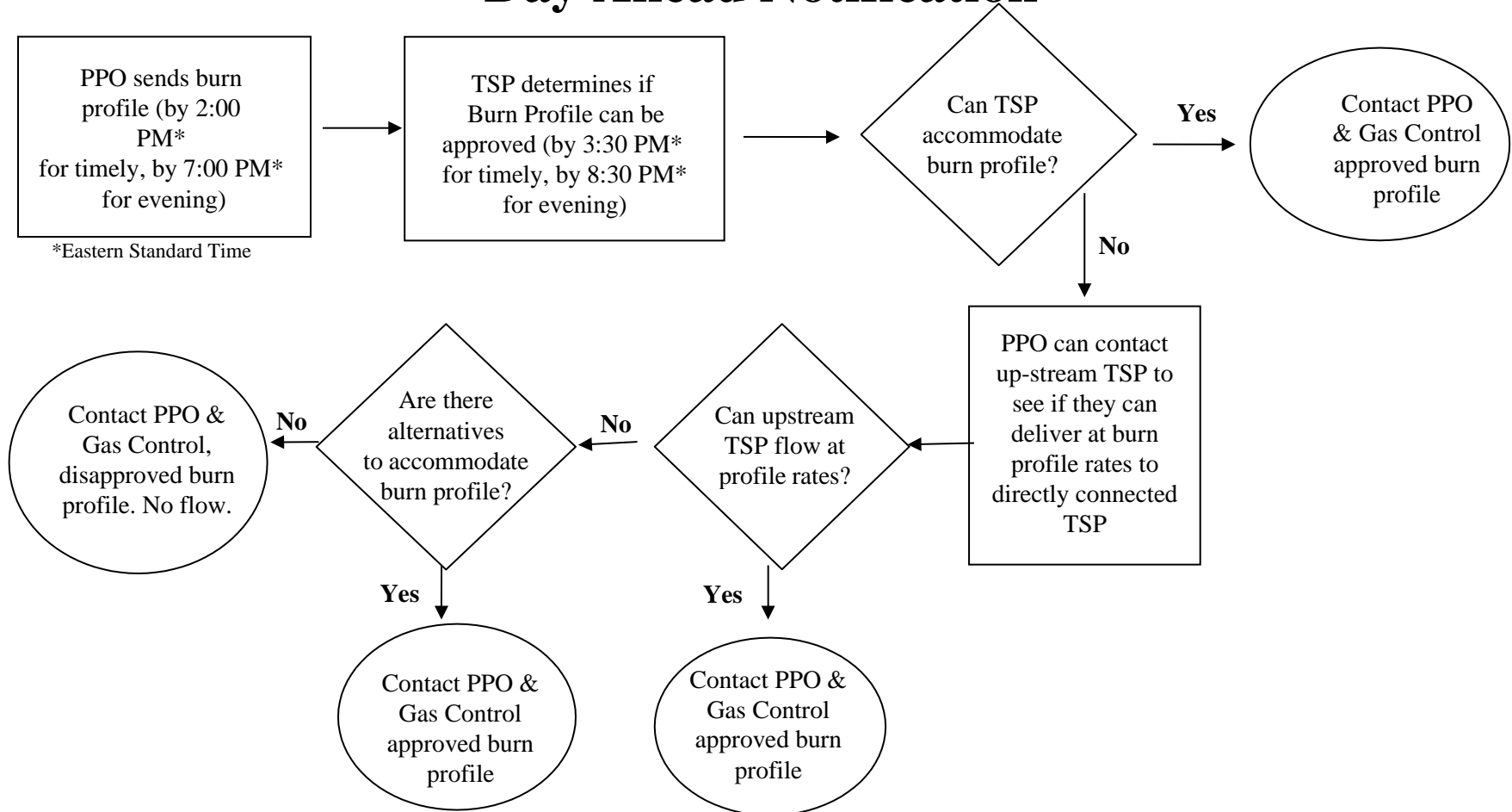


Power Plant Operator (PPO)
Communication Procedures with
Transportation Service Provider
(TSP)

Overall Rules

- Rules for nominating FT and IT are the same
- PPO will provide burn profile with expected hourly flows
- All burn profiles assumed to be zero unless TSP is notified by the PPO
- PPO must have made arrangements for supply or made arrangements for imbalance/MCS drawdown and get burn profile approval before starting to burn gas
- Gas supply and gas burn must be on the same Gas Day
- If gas is nominated and no flow, TSP may cut the supply nomination
- Burn profile and nominations must match
- Burn profile and corresponding flow expected to match
- TSP approves burn profile
- PPO provides TSP with emergency contact information
- Flow control may be utilized to protect other firm customers and/or to protect the integrity of the TSP.

Day Ahead Notification



Intraday

